

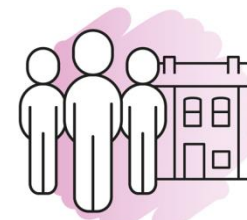
# Commission of Inquiry Vision for Hampshire 2050

Chitra Nadarajah,  
Strategic Manager -  
Climate Change

---

## HAMPSHIRE 2050

VISION FOR THE FUTURE



Demographic  
and societal  
challenges



Economy



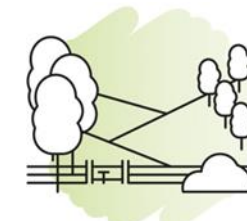
Work, skills  
and lifestyle



Environment  
and quality  
of place

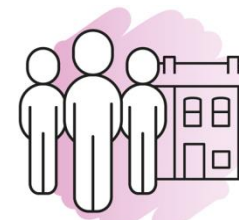


Mobility,  
connectivity  
and energy



Rural  
Hampshire

*To consider submitted evidence, to deliberate upon key issues and to make recommendations on a Vision for Hampshire 2050 which will guide and contribute to the future prosperity, quality of life, and protection and enhancement of the character and environment of Hampshire.*



Demographic and societal challenges



Economy



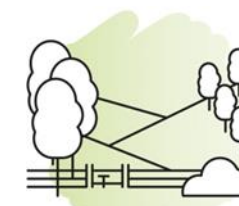
Work, skills and lifestyle



Environment and quality of place



Mobility, connectivity and energy



Rural Hampshire

---

# HAMPSHIRE 2050

VISION FOR THE FUTURE

# Commissioners



# Strategic Themes and Key Dates

Hearing / Session	Hearing Date
<b>Induction &amp; Demographic and Societal Challenges</b>	13th July 2018
<b>Economy</b>	14th September 2018
<b>Work, Skills and Lifestyles</b>	26th October 2018
<b>Environment and Quality of Place</b>	14th December 2018
<b>Mobility, Connectivity and Energy</b>	25th January 2019
<b>Rural Hampshire</b>	22nd February 2019
<b>Cross-cutting Theme Hearing</b>	15th March 2019
<b>Commissioner Deliberation Session 1</b>	12th April 2019
<b>Commissioner Deliberation Session 2</b>	7th June 2019
<b>Extraordinary Full Council Meeting</b>	23rd September 2019

---

**HAMPSHIRE 2050**

VISION FOR THE FUTURE

# Cross-cutting Theme Hearing

## Deprivation

- Deprivation exists in pockets across Hampshire so cannot be ignored; the impacts are wide ranging from health to skills and education
- Multi-morbidity increases with age and is associated with socio-economic deprivation. Even those in the least deprived groups have increased prevalence with age
- Lack of affordable housing, particularly for those in the lower paid key worker community

## Youth

- What is important to that generation for 2050?

## Diversity

- Lack of diversity in Hampshire – impact on key skills and jobs?

## Digital

- The opportunity that technology provides to enhance our lives and society
- Digital skills will become embedded in our social infrastructure; mobile technologies will enable better reach and access to work, leisure and services
- Negative consequences – isolation, addiction, loneliness and the potential impact on health

# Evidence Gathering

## Public

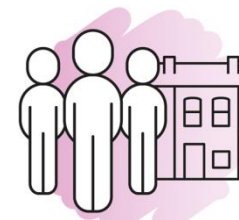
- Vox pop' interviews
- Online survey

## Partners

- Officer and Member groups

## Experts

- Identified by theme leads across strategic themes



Demographic and societal challenges



Economy



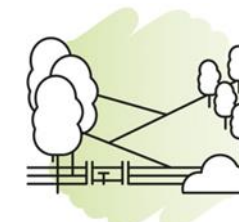
Work, skills and lifestyle



Environment and quality of place



Mobility, connectivity and energy



Rural Hampshire

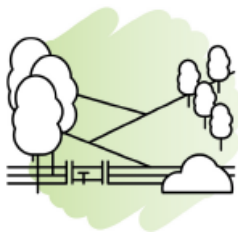
---

# HAMPSHIRE 2050

VISION FOR THE FUTURE

# Commissioners' Summary Report

Hampshire 2050, Vision for the Future



*“Our ambition is to establish a vision which will guide and contribute to the continuing prosperity of Hampshire, while protecting and enhancing our unique quality of place for generations to come.”*

**Councillor Roy Perry,**  
Hampshire County Council

# Key Values & Principles

*The only certainty about 2050 is that the world, and our part in it, will be very different from how it is today.*



**Hampshire the Place**



**People & Communities**



**Diversity & Sustainability**



**Climate Change**



**Leadership & Collaboration**



**Measures of Success**

---

# HAMPSHIRE 2050

VISION FOR THE FUTURE



# Drivers for change



**Changing Climate**



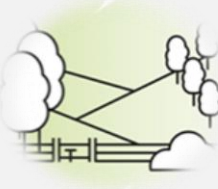
**Changing Environment**



**Changing Economy**



**Changing Population & Society**



**Changing Technology**

---

# HAMPSHIRE 2050

VISION FOR THE FUTURE



**Changing Climate** – Develop and promote a focus on embedding climate resilience and mitigation across key policies and sectors, working with communities across Hampshire.



**Changing Environment** – Develop and promote a focus on sustaining and enhancing Hampshire's environment to strengthen Hampshire's economy and society.



**Changing Economy** – Maintain a focus on fostering a knowledge based and sustainable Hampshire economy, working closely with businesses and relevant agencies.



**Changing Population & Society** – Maintain a focus on promoting the evolution and development of communities that support equity, connectivity, diversity, sustainability and resilience.



**Changing Technology** – Prioritise a focus on opportunities offered by technology to enhance business and economy, public services, social infrastructure and connectivity.

# Recommendations from Full Council

- Take a leadership role in ensuring the Commissioners' report is received and considered by key partners
  - Review key policies where appropriate in light the Commissions' recommendations
  - Establish an evidence base for key policy areas against which progress on the Commission's recommendations can be measured
- Develop further detailed work with Cabinet and Policy and Resources Committee
  - Report on progress twice annually to the repurposed Hampshire Partnership Board – the first Board of the re-purposed Hampshire 2050 Partnership is on the 26<sup>th</sup> November – focus on Climate Change
  - Work to engage with schools and/or youth organisations

# Climate Change Strategy and Action Plan



Targets & Measurement



Policies & Strategies



Partnerships



Exemplar Projects



Expert Groups



Community Groups



Behavioural Insights

---

**HAMPSHIRE 2050**

VISION FOR THE FUTURE

# Synergies with Health and Wellbeing

***There was a clear consensus from the Commissioners that human relationships, communities, and public health and wellbeing are at the heart of achieving a positive future for Hampshire, and should therefore underpin the recommendations.***

# Synergies with Health and Wellbeing

## Climate Change & Environment

- *Support, enable and empower communities to be more resilient and work together to respond to the impacts of a changing climate (e.g. flooding, heat waves).*
- *Develop and promote community resilience and individual health and wellbeing by taking full advantage of Hampshire's natural environment.*

# Synergies with Health and Wellbeing

## Population & Society

- *Prioritise physical and mental health within community shaping to maximise multiple benefits – e.g. green spaces with more walking/cycling routes support physical wellbeing and can reduce anxiety.*
- *Maximise opportunities to improve productivity and adapt service delivery with a particular focus on health and social care to respond to the changing demographics.*

## Technology

- *Maximise the benefits offered by AI to improve public services particularly in the health and social care sector.*



Hampshire  
County Council

We asked some Hampshire residents and businesses  
what they thought about Hampshire...

**HAMPSHIRE 2050**

VISION FOR THE FUTURE

---

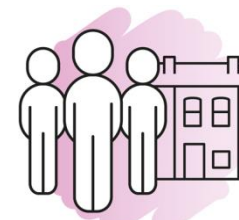
**HAMPSHIRE 2050**

VISION FOR THE FUTURE



# Thank You & Questions

[www.hants.gov.uk/visionforhampshire2050](http://www.hants.gov.uk/visionforhampshire2050)



Demographic  
and societal  
challenges



Economy



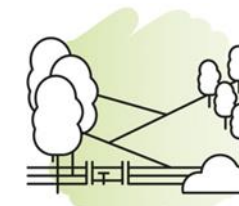
Work, skills  
and lifestyle



Environment  
and quality  
of place



Mobility,  
connectivity  
and energy



Rural  
Hampshire

---

## HAMPSHIRE 2050

VISION FOR THE FUTURE